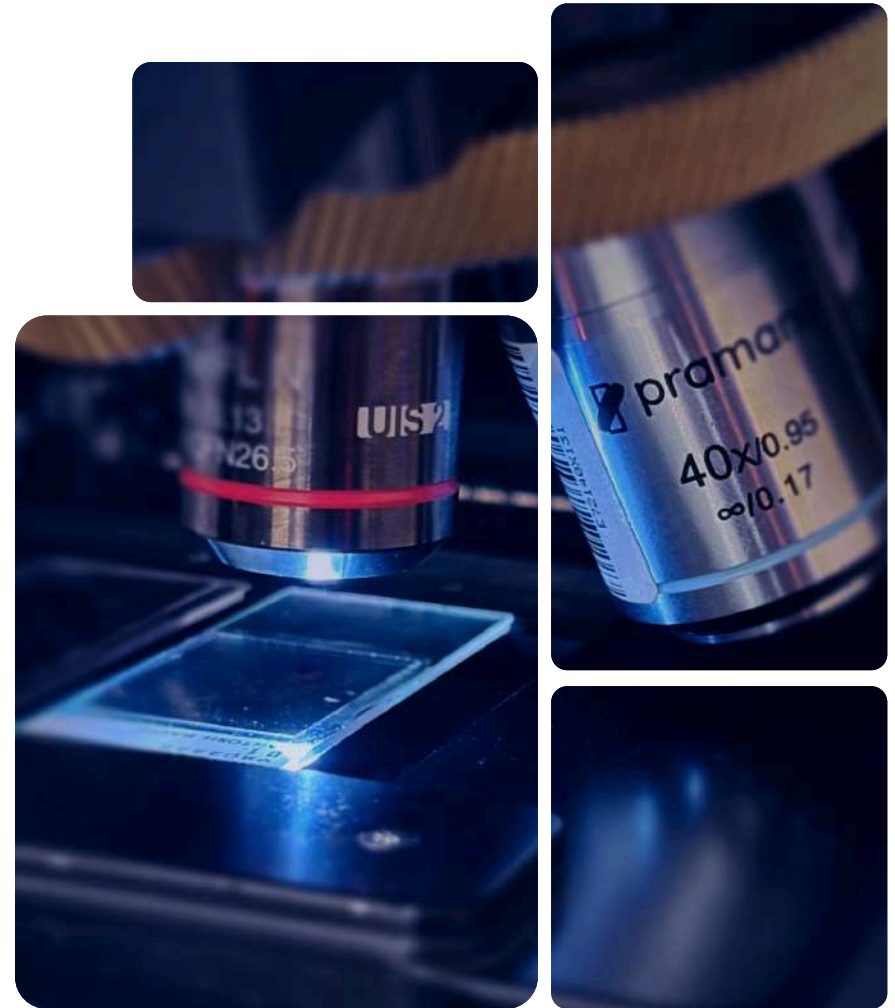


# Pramana **Autonomous** Whole Slide Imaging



# Shaping the Future



Evident is ushering in a new era for digital pathology by shifting the focus from creating images to deriving insights from them.

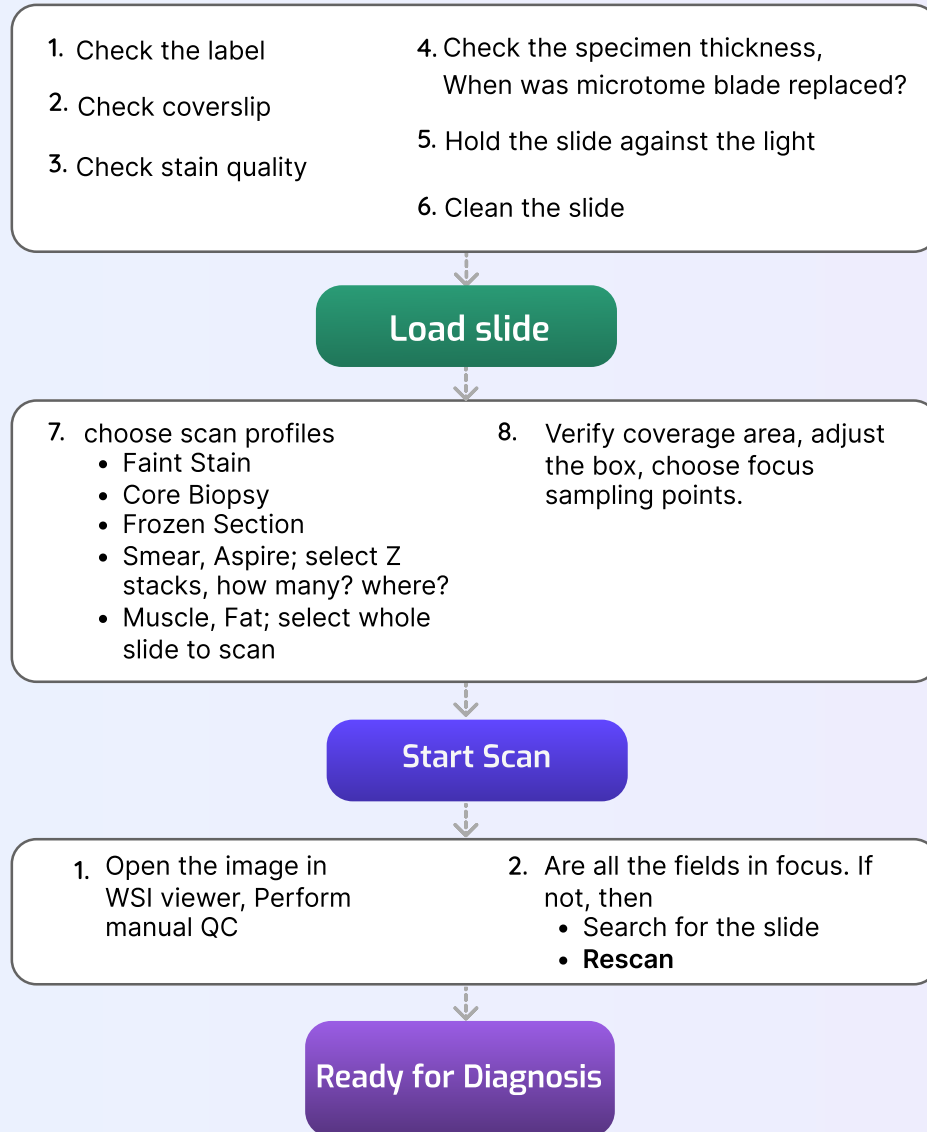
Evident aims to bring Autonomous Intelligence to the slide-handling process, regardless of how the slides are prepared, to produce the most accurate Whole Slide Images on the first pass. This ambitious goal has been rigorously tested and continuously refined, resulting in the creation of over 20 million whole slide images, covering every type of glass slide a lab encounters in its daily operations.

## Digital Pathology 2.0 = Autonomous Whole Slide Imaging

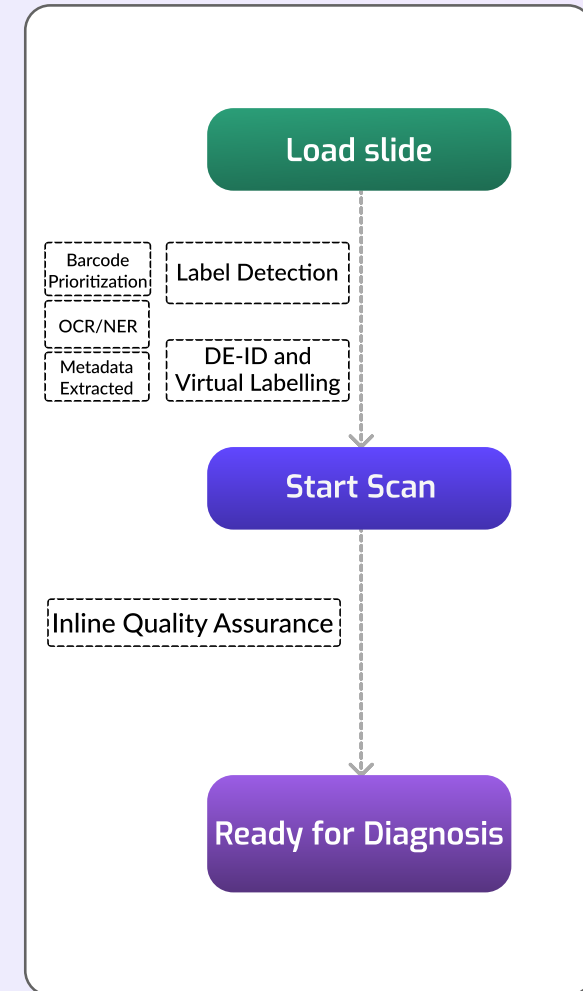


# What does Autonomous look like?

## Other scanners

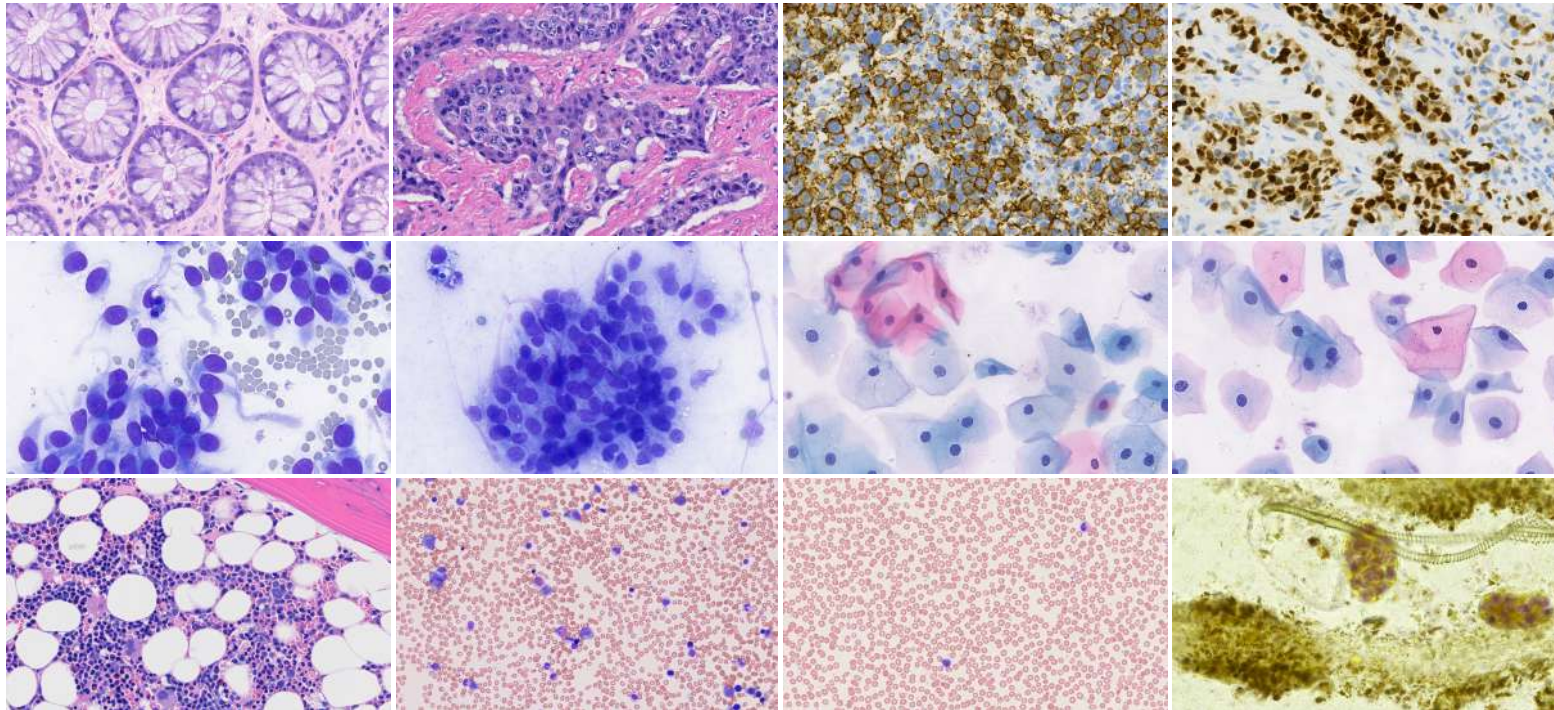


## Pramana scanners



# Applications

Pramana scanners are built for versatility, capable of handling a wide range of specimen types. They accurately scan pathological samples, including routine tissues, core biopsies for lesion assessments, and bone marrow samples for hematopathological evaluations. These scanners excel in imaging and efficiently processing wet mount, cytology, and microbiological slides, providing confidence for pathologists to move their work to digital.



Histopathology

Cytology

Hematology

Microbiology

Clinical Pathology

# Value Proposition

---



## Autonomous Scanning

The autonomous system ensures seamless, hands-free operation and precise completion for most slide types, allowing you to confidently walk away after loading the slides



## Modular and Scalable

The modular design offers flexibility for easy upgrades, customization, and scalability to meet growing demands. It offers redundancy and flexibility with motorized turret for multiple objectives.



## Inline QA and Auto-Rescan

Our systems ensure no specimen fragment is missing and no FOV is out-of-focus. Autonomous rescan is attempted when scanning of specific FOV is failed.



## Edge AI

Ability to run many feature description algorithms in real time on the scanner. Secure, zero cost and shortest time to run your AI.

*“If you can manage to read a slide under your microscope,  
Pramana scanners will handle such slide without complaining”*

# 01

## SpectralHT Cubiq



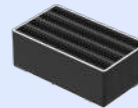
The SpectralHT Cubiq Scanner is designed and engineered for large-scale, hands-free scanning. It ensures diagnostic precision with in-line quality checks, delivering swift, accurate results tailored to meet the expectations of discerning pathologists.

### Configurations

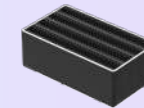
#### 4 Head



#### 2 Head



**960 Slides**  
8 Pramana Baskets  
**480 Slides**  
4 Pramana Baskets



**480 Slides**  
4 Pramana Baskets  
**240 Slides**  
2 Pramana Baskets



**320 Slides**  
16 Sakura Baskets



**320 Slides**  
16 Sakura Baskets



**360 Slides**  
12 Leica Baskets



**360 Slides**  
12 Leica Baskets

# 02 SpectralM

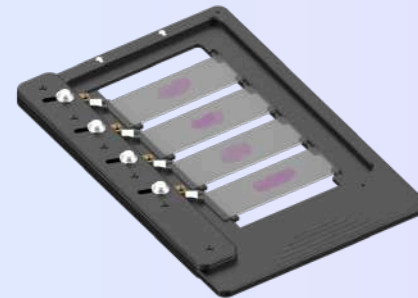


The SpectralM is a compact desktop imaging system designed for creating whole slide images by manually loading up to four glass slides.

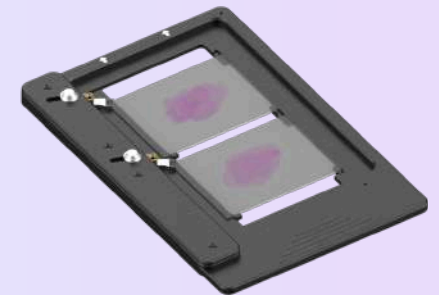
With the "Quick Scan" option, it delivers autonomous scanning capabilities like high-throughput models. In "Preview and Scan" mode, Pramana's advanced algorithms pre-populate tissue localization while allowing users to adjust settings, scan areas, and magnification.

The SpectralM is an ideal solution for labs needing a dependable system for whole slide imaging, particularly for challenging specimens that may be difficult for other scanners to handle.

## Configurations



4 Slide Cassette



2 Slide Cassette

# Specifications

## SpectralHT-A

## SpectalM-A

## SpectralHT-B

## SpectralM-B

	SpectralHT-A	SpectalM-A	SpectralHT-B	SpectralM-B
<b>Applications*</b>	<b>Anatomic Pathology, Cytology, Hematopathology</b>		<b>Cytology, Microbiology, Anatomic Pathology, Hematopathology</b>	
<b>Specimen Type</b>	Tissue biopsy, Frozen sections, Squash preparation, Bone marrow aspirate, Peripheral smears, Imprint smears, Liquid based cytology - Surepath & Thinprep, Conventional Pap smear, Conventional cytology smear, Clinical pathology wet mounts		Tissue biopsy, Frozen sections, Squash preparation, Bone marrow aspirate, Peripheral smears, Imprint smears, Liquid based cytology - Sure path & Thin prep, Conventional Pap smear, Conventional cytology smear, Clinical pathology wet mounts, Human fecal trichrome, microbiology slides for bacteria, fungus and protozoans	
<b>WSI Output Format</b>	DICOM, OME - TIFF			
<b>Magnifications</b>	4x, 20x(0.8NA), 40x(0.95NA)		4x, 20x, 40x(0.8NA), 80X(0.95NA)	
<b>Resolution</b>	0.25 microns per pixel at 40x		0.28 microns per pixel at 40x 0.12 microns per pixel at 80x	
<b>Slide Artifact Handling</b>	Very faint tissue, very tiny tissue, thick cuts, double thick slides, broken coverslips, debris, dirty coverslips, protruding labels, Multiple labels			
<b>Image compression</b>	JPEG Visually Lossless (configurable), ZStandard			



ISO 13485



CE IVDR



Santé Health  
Canada Canada

Health Canada

*'For research use only in the United States'*

*'Pending US FDA 510(k)'*

\*Preferred applications are highlighted in bold



# Dashboard

The Pramana Scanner UI offers a powerful, easy-to-use interface with features designed to streamline scanning workflows and ensure precision at every step.



## Intuitive Interface:

User-friendly design for effortless navigation and operation.



## Customizable Settings:

Adjust scanning parameters for different slide types and workflows.



## Remote Access:

Monitor and control the scanner from anywhere within the network.



## Post-Scan Review:

Easily review and validate scanned slides before proceeding.



Pramana Gen 1 scanners are deployed within a tissue registry at a major client site in central United States.



## Contact Us

---

### Rochester (Headquarters)

Pramana, Inc  
2900 37th Street NW, Dock 101  
Rochester, MN 55901  
USA  
[www.pramana.ai](http://www.pramana.ai)  
[info@pramana.ai](mailto:info@pramana.ai)

### Toronto

Pramana Inc.  
Suite 730, 70 York St, Toronto,  
ON M5J 1S9.  
Canada

### Bengaluru

3rd Floor, Indiqube  
Golf View Homes, 3rd Cross,  
NAL Wind Tunnel Main Road,  
Murugeshpalaya, Bengaluru- 560017,  
India



[Contact@pramana.ai](mailto:Contact@pramana.ai)



Follow us on linkedin



[www.pramana.ai](http://www.pramana.ai)